

Absence of Lutein, Violaxanthin and Neoxanthin Affects the Functional Chlorophyll Antenna Size of Photosystem-II but not that of Photosystem-I in the Green Alga *Chlamydomonas reinhardtii*

Juergen E. W. Polle, Krishna K. Niyogi and Anastasios Melis¹

Department of Plant and Microbial Biology, 411 Koshland Hall, University of California, Berkeley, CA 94720-3102, U.S.A.

Chlamydomonas reinhardtii double mutant *npq2 lor1* lacks the β,ϵ -carotenoids lutein and loroxanthin as well as all β,β -epoxycarotenoids derived from zeaxanthin (e.g. violaxanthin and neoxanthin). Thus, the only carotenoids present in the thylakoid membranes of the *npq2 lor1* cells are β -carotene and zeaxanthin. The effect of these mutations on the photochemical apparatus assembly and function was investigated. In cells of the mutant strain, the content of photosystem-II (PSII) and photosystem-I (PSI) was similar to that of the wild type, but *npq2 lor1* had a significantly smaller PSII light-harvesting Chl antenna size. In contrast, the Chl antenna size of PSI was not truncated in the mutant. SDS-PAGE and Western blot analysis qualitatively revealed the presence of all LHCII and LHCI apoproteins in the thylakoid membrane of the mutant. The results showed that some of the LHCII and most of the LHCI were assembled and functionally connected with PSII and PSI, respectively. Photon conversion efficiency measurements, based on the initial slope of the light-saturation curve of photosynthesis and on the yield of Chl *a* fluorescence *in vivo*, showed similar efficiencies. However, a significantly greater light intensity was required for the saturation of photosynthesis in the mutant than in the wild type. It is concluded that zeaxanthin can successfully replace lutein and violaxanthin in most of the functional light-harvesting antenna of the *npq2 lor1* mutant.

Key words: Carotenoid mutant — *Chlamydomonas reinhardtii* — Chlorophyll antenna size — Light-harvesting proteins — Photosynthesis — Photosynthetic capacity.

Abbreviations: Car, carotenoids; CP24, CP26 and CP29, Chl-proteins 24, 26 and 29; LHCI and LHCII, light harvesting complex of PSI and PSII, respectively; PMSF, phenylmethylsulfonyl fluoride.

Introduction

Higher plants and green algae collect light energy for photosynthesis by an antenna system consisting of pigment-protein complexes. These complexes contain Chl and various carotenoids (Car) with different cyclic end-groups (Cunningham and

Gantt 1998). The various Car are distributed among the photosynthetic complexes in the thylakoid membrane and play multiple roles in photosynthesis. They contribute to light harvesting, maintain structure and function of the photosynthetic complexes, quench Chl triplet states, scavenge reactive oxygen species, and dissipate excess energy (Demmig-Adams et al. 1996, Niyogi 1999).

The most abundant Car in higher plants and green algae are the β,ϵ -carotenoid lutein and the β,β -carotenoid violaxanthin. They are associated with the light-harvesting complexes of PSI (LHCI) and PSII (LHCII). LHCII comprises several different Chl *a/b*-binding proteins, which are distinguished according to their abundance in the thylakoid membrane into major LHCII and minor LHCII. The minor LHCII are also termed CP29, CP26, and CP24 (Jansson 1994). It is generally accepted that assembly of the major LHCII requires approximately seven Chl *a* molecules, six Chl *b* molecules, two lutein molecules and one neoxanthin molecule (Kuhlbrandt et al. 1994, Croce et al. 1999a, Hobe et al. 2000). In contrast to the major LHCII, the minor LHCII bind fewer Chl molecules, have a higher Chl *a*/Chl *b* ratio and are enriched in violaxanthin (Bassi et al. 1993, Ruban et al. 1994, Green and Durnford 1996, Sandona et al. 1998). Although less is known about the Car composition of light-harvesting proteins associated with PSI (LHCI), all LHC proteins are believed to contain at least three Car binding sites which show preferential binding for the xanthophylls lutein, violaxanthin and neoxanthin (Lee and Thornber 1995, Croce et al. 1999b).

Under physiological conditions *in vivo*, the Car zeaxanthin occurs only in trace amounts within the LHC (Ruban et al. 1994, Lee and Thornber 1995, Verhoeven et al. 1999). However, during high-light exposure of photosynthetic tissue, zeaxanthin is formed upon de-epoxidation of violaxanthin through operation of the reversible xanthophyll cycle (Yamamoto 1979, Yamamoto 1985). Although zeaxanthin binds to the LHC during irradiance stress, such association is usually only transient. Upon recovery under low-light or in darkness, zeaxanthin is replaced by violaxanthin (Yamamoto 1985). Because zeaxanthin is present only under irradiance stress conditions, and even then in relatively small amounts, its specific association with the LHC proteins is difficult to establish. Nevertheless, it was concluded from recent *in vitro* studies (Croce et al. 1999b, Hobe et al. 2000), upon analysis of zeaxanthin accumulating

¹ Corresponding author: E-mail, melis@nature.berkeley.edu; Fax, +1-510-642-4995.

Arabidopsis thaliana mutants (Pogson et al. 1996, Pogson et al. 1998, Tardy and Havaux 1996), and from the green alga *Scenedesmus obliquus* (Heinze et al. 1997, Bishop et al. 1998), that zeaxanthin could replace lutein and violaxanthin in the LHC of the photosynthetic apparatus.

Although the Car composition of the LHC in lutein and violaxanthin lacking mutants has been investigated before, the photosynthetic apparatus organization of such Car mutants has not been determined. It is still unclear whether zeaxanthin can functionally replace lutein and violaxanthin *in vivo*. In this work, we characterized the photosynthetic apparatus organization and function of a mutant (*npq2 lor1*) of the green alga *Chlamydomonas reinhardtii* with specific deletions in Car biosynthesis. The size of the light-harvesting Chl antenna, the stoichiometry of the photosystems and the functionality of the photosynthetic apparatus in the absence of lutein, luteoxanthin, violaxanthin and neoxanthin are questions that have been addressed in this work. We present evidence that when zeaxanthin is the sole xanthophyll present, LHC complexes are assembled and functionally connected with the reaction center complexes of PSII and PSI. Contrary to results reported for *S. obliquus* (Bishop et al. 1998), absence of lutein and violaxanthin did not appear to compromise the photon conversion efficiency of photosynthesis in *C. reinhardtii*. However, lack of these xanthophylls specifically resulted in a truncated light-harvesting Chl antenna size for PSII in the *npq2 lor1* mutant.

Materials and Methods

Organisms, maintenance and growth

Cells of *C. reinhardtii* wild-type strain CC125 and of the *npq2 lor1* mutant were cultivated photoautotrophically on HS (Harris 1989) agar plates under 5 $\mu\text{mol photons m}^{-2} \text{s}^{-1}$ continuous light (cool-white fluorescent). For measurements cells were grown in liquid culture at 200 $\mu\text{mol photons m}^{-2} \text{s}^{-1}$ at 22°C in flat 1 liter Roux bottles in bicarbonate enriched medium (Polle et al. 2000). Stirring of the cultures prevented cell settling and ensured uniform illumination.

Cell count and pigment analysis

Cell density was monitored by counting the number of cells per milliliter of culture using a Neubauer ultraplane hemacytometer. The absorbance of light $\lambda > 640 \text{ nm}$ of the cell culture was measured using a Klett-Summerson photoelectric colorimeter (Sumner and Somers 1944). For growth curves the logarithm of the reading (Ln Growth) was plotted as a function of time.

For pigment determination cells or thylakoid membranes were extracted in 80% acetone and debris was removed by centrifugation at 10,000 $\times g$ for 5 min. The absorbance of the supernatant was measured with a Shimadzu UV-160U spectrophotometer. The Chl (*a* and *b*) concentration of the samples was determined according to Arnon (1949), with equations corrected as in Melis et al. (1987).

For HPLC analysis the HPLC model Hewlett Packard Series 1100 equipped with a Waters Spherisorb S5 ODS1 4.6 \times 250 mm cartridge column was used. One ml algal suspension was centrifuged at 14,000 rpm for 2 min. The pigments were extracted from algal cells by adding 200 μl 100% acetone to the pellet and vortexing at maximum speed for 1 min. The extract was centrifuged in an Eppendorf centri-

fuge at 14,000 rpm and 15 μl of the filtered supernatant (0.2 μm nylon filter) subjected to HPLC. HPLC analysis was performed using a modification of the method of Garcia-Plazaola and Becerril (1999). Pigments were eluted with a linear gradient from 100% solvent A (acetonitrile : methanol : [0.1 M Tris-HCl pH 8.0]; 84 : 2 : 14) to 100% solvent B (methanol : ethyl acetate; 68 : 32) for 15 min, followed by 3 min of solvent B. The solvent flow rate was 1.2 ml min^{-1} . Pigments were detected by absorbance at 445 nm with a reference at 550 nm, and concentrations of individual pigments were determined using standard curves of purified pigments (VKI, Hørsholm, Denmark) at known concentrations.

Isolation and separation of thylakoid membrane proteins

Cells were harvested by centrifugation at 1,000 $\times g$ for 4 min at 4°C. The resulting pellets were resuspended in 1–2 ml buffer containing 50 mM Tricine (pH 7.8), 10 mM NaCl, 5 mM MgCl_2 and stored frozen at -80°C . Samples were thawed on ice and diluted with ice-cold sonication buffer containing 50 mM Tricine (pH 7.8), 10 mM NaCl, 5 mM MgCl_2 , 0.2% polyvinylpyrrolidone 40, 0.2% sodium ascorbate, 1 mM aminocaproic acid, 1 mM aminobenzamidine and 100 μM phenylmethylsulfonylfluoride (PMSF). Cells were broken by sonication with a Branson 250 Cell Disrupter operated at 4°C for 30 s (pulse mode, 50% duty cycle, output power 5). This process was repeated three times with 30 s interval. Unbroken cells and starch grains were removed by centrifugation at 3,000 $\times g$ for 4 min at 4°C. These crude thylakoid membranes were collected by centrifugation of the supernatant at 100,000 $\times g$ for 25 min at 4°C.

For protein analysis of crude thylakoid membranes the pellet was solubilized in 250 mM Tris-HCl (pH 6.8), 20% glycerol, 7% SDS and 2 M urea. Solubilization of thylakoid membrane proteins was carried out for 30 min at room temperature (a procedure designed to prevent the formation of protein aggregates during denaturation) and was followed by centrifugation of the samples in a microfuge for 4 min to remove unsolubilized material. Aliquots for Chl determination were taken and samples diluted accordingly to yield equal Chl concentrations before the samples were stored at -80°C .

SDS-PAGE and immunoblot analysis

Prior to loading for electrophoresis, samples were brought to room temperature. Gel lanes were loaded with an equal amount of Chl (4 nmol Chl per lane). SDS-PAGE analysis was carried out according to Laemmli (1970), with resolving gels containing 12.5% acrylamide. Gels were first run for 30 min at a constant current of 16 mA until the samples migrated into the gels and then for 16 h at a constant current of 9 mA. For protein visualization, gels were stained with 1% Coomassie brilliant blue R. Electrophoretic transfer of the SDS-PAGE resolved proteins onto nitrocellulose was carried out for 3 h at a constant current of 800 mA, in transfer buffer containing 50 mM Tris, 380 mM glycine (pH 8.5), 20% methanol and 1% SDS. Identification of LHC proteins of the thylakoid membrane was accomplished with polyclonal antibodies raised against the LHC complex of *Zea mays*, kindly provided by Dr. R. Bassi (Di Paolo et al. 1990, Bassi et al. 1992) and polyclonal antibodies raised against a polypeptide of CP26. For determination of the level of reaction center core complex proteins polyclonal antibodies against the D1 protein (Kim et al. 1993) or the *psaA/psaB* gene products (Kashino et al. 1990) were used. Cross-reaction with the antibodies was visualized by a chromogenic reaction with anti Ig-G secondary antibodies conjugated with alkaline phosphatase (BioRad, Hercules, CA). Immunoblots were scanned with a HP Scanjet 5300C optical scanner connected to a MacIntosh/G3 computer and the NIH Image version 1.6 program was used for deconvolution of the bands.

Chlorophyll fluorescence

The initial (F_0), variable (F_v) and maximum (F_{max}) Chl fluorescence yield of intact cells was measured upon excitation of the cultures with green light (CS 4-96 and CS 3-69 Corning Filters, actinic light intensity of $75 \mu\text{mol photons m}^{-2} \text{s}^{-1}$). An aliquot from the culture was incubated in the dark for 10 min prior to the measurement and the Chl fluorescence was recorded in the absence or presence of DCMU ($2.5 \mu\text{M}$ final concentration).

A fluorescence video imaging apparatus (Niyogi et al. 1997a, Niyogi et al. 1998) was utilized to visualize the Chl fluorescence of algal cultures grown on agar plates. Prior to the measurement the plates were dark incubated for at least 5 min. Actinic illumination of $\sim 2,000 \mu\text{mol photons m}^{-2} \text{s}^{-1}$, sufficient to induce the F_{max} emission from the algal colonies, was employed in this fluorescence video imaging analysis. The actinic illumination was administered for a period of 1 s and the resulting fluorescence images were captured by the digital video camera of the apparatus.

Spectrophotometric analyses

For spectrophotometric measurements the thylakoid membrane pellet was resuspended in a buffer containing 50 mM Tricine (pH 7.8), 10 mM NaCl, 5 mM MgCl_2 . The concentration of the photosystems in the thylakoid membranes was estimated spectrophotometrically from the amplitude of the light minus dark absorbance difference signal at 700 nm (P700) for PSI, and 320 nm (Q_A) for PSII (Melis and Brown 1980). The functional light-harvesting Chl antenna size of PSI and PSII was measured from the kinetics of P700 photo-oxidation and Q_A photoreduction, respectively (Melis 1989).

Oxygen evolution measurements

Oxygen evolution activity of the cultures was measured at 22°C with a Clark-type oxygen electrode illuminated with a slide projector lamp. Yellow actinic excitation light was provided by a CS 3-69 Corning cut-off filter in combination with an Ealing 35-5453 VIQ5-8 filter. An aliquot of 5 ml cell suspension ($2 \mu\text{M}$ Chl) was transferred to the oxygen electrode chamber. To ensure that oxygen evolution was not limited by the carbon source available to the cells, $100 \mu\text{l}$ of 0.5 M sodium bicarbonate solution (pH 7.4) was added to the suspension prior to the oxygen evolution measurements. The measurement of the light-saturation curve of photosynthesis was implemented with the oxygen electrode, beginning with the registration of dark respiration in the cell suspension, and followed by measurements of the rate of oxygen evolution at 30, 70, 125, 240, 375, 525, 700, 1,150, 1,500, 2,250, and $3,200 \mu\text{mol photons m}^{-2} \text{s}^{-1}$. Registration of the rate (slope) of oxygen evolution at each light intensity step was recorded for about 2.0 min. The photosynthetic efficiency of the cells was calculated from the initial slope of the light-saturated curve of photosynthesis.

Results

Isolation and pigment analysis of a secondary pigment mutant

From the background of the β,ϵ -carotenoid-less strain *lor1* of *C. reinhardtii* (Chunaev et al. 1991, Niyogi et al. 1997a, Niyogi et al. 1997b), we isolated a spontaneous *npq2* mutation, resulting in the absence of the β,β -epoxycarotenoids antheraxanthin, violaxanthin and neoxanthin (Fig 1). Lack of xanthophylls derived from zeaxanthin was due to a defect in the activity of the zeaxanthin epoxidase enzyme (Niyogi et al. 1997a). Based on the results of the HPLC analysis, showing that zeaxanthin was the only xanthophyll present, we termed

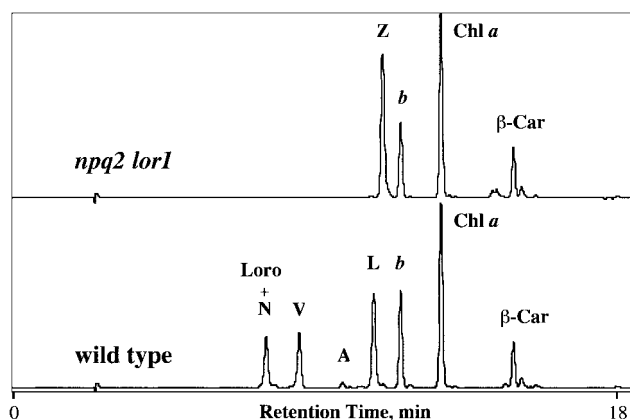


Fig. 1 HPLC elution profile of total pigment extract from *C. reinhardtii* wild type and *npq2 lor1* mutant. Traces were normalized to the peak of Chl *a*. Identification of lettered peaks is as follows: Loro, Loroxanthin; N, neoxanthin; V, violaxanthin; A, antheraxanthin; L, lutein; Z, zeaxanthin; *b*, Chl *b*; β -Car, β -carotene.

this new Car mutant as *npq2 lor1*. Table 1 shows that the Chl *a*/Chl *b* ratio (= 4.1) of the *npq2 lor1* mutant, like its *lor1* parent (Niyogi et al. 1997b), was significantly higher than that of the wild type (= 2.9). This result suggested a different photosynthetic apparatus organization for the mutant than for the wild type (Anderson 1986, Melis 1991). Table 1 also shows that the total amounts of Chl and Car per cell in the mutant were slightly lower than that of the wild type. However, the total Car to Chl mol : mol ratio was the same in the two strains. Taken together, these results (Fig. 1 and Table 1) suggest that, in the *npq2 lor1* mutant, zeaxanthin has replaced at least lutein and violaxanthin in the two of the three xanthophyll-binding sites of the LHCII. The third, neoxanthin-binding site in the LHCII is reported to be highly specific for this xanthophyll species (Croce et al. 1999a, Croce et al. 1999b, Connelly et al. 1997) and, therefore, it is possible that this binding site remains empty in the absence of neoxanthin in the *npq2 lor1* mutant.

Photosynthetic apparatus organization

Fig. 2 shows growth curves of wild type and *npq2 lor1* mutant in a liquid Tris-Bicarbonate medium (see Materials and

Table 1 Pigment content of wild type and a mutant of *C. reinhardtii* (*npq2 lor1*) lacking lutein, loroxanthin, violaxanthin and neoxanthin

Parameter	Wild type	Mutant
Chl <i>a</i> /Chl <i>b</i>	2.9 \pm 0.2	4.1 \pm 0.4
mol $\times 10^{-15}$ Chl cell $^{-1}$	4.4 \pm 0.7	3.1 \pm 0.33
mol $\times 10^{-15}$ Carotenoids cell $^{-1}$	1.7 \pm 0.2	1.2 \pm 0.2
Car/Chl (mol : mol)	0.39	0.39

Values represent means \pm SD.

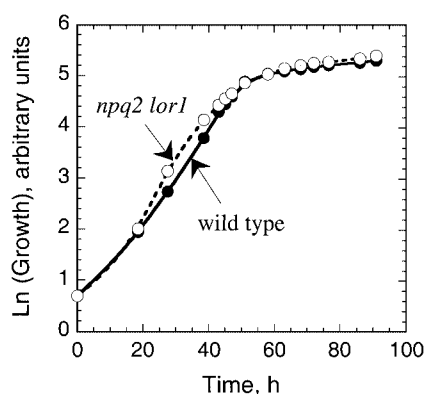


Fig. 2 Growth curve of wild type (closed circle) and *npq2 lor1* (open circle) mutant of *C. reinhardtii*. The logarithm of a photoelectric calorimeter reading of the cultures is plotted as a function of time during cell growth. Cells were cultivated photoautotrophically on a bicarbonate enriched medium under $200 \mu\text{mol photons m}^{-2} \text{s}^{-1}$.

Methods) under a light intensity of $200 \mu\text{mol photons m}^{-2} \text{s}^{-1}$. Wild-type and *npq2 lor1* mutant cells had similar growth rates indicating that lack of lutein, loroxanthin, violaxanthin and neoxanthin did not compromise the photosynthetic and growth abilities of the *npq2 lor1* mutant.

In order to investigate the photosynthetic apparatus organization of the *npq2 lor1* mutant, we measured, spectrophotometrically, the amounts of photochemically active primary quinone acceptor Q_A of PSII and the reaction center P700 of PSI. Table 2 shows that, on a Chl basis, the *npq2 lor1* mutant ($4.5 \text{ mmol } Q_A (\text{mol Chl})^{-1}$) had about 50% more photochemically competent PSII centers than the wild type ($2.9 \text{ mmol } Q_A (\text{mol Chl})^{-1}$). The amount of P700 per Chl in the mutant (1.74 mmol : mol) was only slightly higher than that of the wild type (1.4 mmol : mol). When compared on a per cell basis, mutant and wild type had similar amounts of Q_A (Table 2). In contrast, the amount of P700 per cell in the mutant was slightly lower than that in the wild type (Table 2). In consequence, the PSII/PSI molar ratio in the mutant ($2.6 : 1$) was slightly higher than that in the wild type ($2.1 : 1$).

The lower Chl per cell content and the elevated Chl *a*/Chl *b* ratio in *npq2 lor1* indicated a truncated Chl antenna size of the photosystems in the mutant relative to that in the wild type. In order to address this point in detail, we performed measurements of the functional Chl antenna size of the photosystems with the “kinetic/spectrophotometric” method (Melis and Anderson 1983, Melis 1989). In this approach, functional Chl molecules are assigned to each photosystem in direct proportion to the rate of light absorption/utilization by PSI and PSII. The rates for PSI and PSII were measured in isolated and DCMU poisoned thylakoids from the kinetics of P700 photooxidation and Q_A photoreduction, respectively (Melis 1989). Results, summarized in Table 3, showed that thylakoid mem-

Table 2 Photochemical apparatus characteristics of wild type and *npq2 lor1* mutant of *C. reinhardtii*

Parameters	Wild type	Mutant
$Q_A/\text{total Chl}$ (mmol : mol)	2.9 ± 0.18	4.5 ± 0.4
P700/total Chl (mmol : mol)	1.4 ± 0.1	1.74 ± 0.05
$\times 10^{-18} \text{ mol } Q_A/\text{cell}$	13.0	13.9
$\times 10^{-18} \text{ mol P700}/\text{cell}$	6.3	5.4
PSII/PSI	2.1	2.6

Table 3 Chl antenna sizes of PSII and PSI in wild type and *npq2 lor1* mutant

Parameter	Wild type	Mutant	Minimum Chl antenna size
PSII α	55%	23%	
PSII β	45%	77%	
$N_{\text{PSII}\alpha}$	301	171	
$N_{\text{PSII}\beta}$	135	90	37
N_{PSI}	242	294	95

The concentration of the various forms of PSII is given as a % of total PSII in the thylakoid membrane. The antenna size of PSII and PSI is given as the number of Chl molecules functionally associated with a photosystem. Values represent the average of two experiments.

branes of wild type contain approximately equal amounts of the two types of PSII, PSII α and PSII β (Melis and Duysens 1979). This distribution is similar to that reported for the *C. reinhardtii* strain *cw15* (Polle et al. 2000). However, in the *npq2 lor1* mutant, PSII α accounted for only about 23% and PSII β for 77% of the total PSII. Further, Table 3 provides values for the functional Chl antenna size (N) of PSII α , PSII β and PSI in the thylakoid membrane of wild type and *npq2 lor1* mutant. In the wild type, PSII α contained about 300 Chl *a* and Chl *b* molecules and PSII β contained 135 Chl molecules. The Chl antenna size of PSI contained about 240 Chl *a* and Chl *b* molecules.

In the *npq2 lor1* mutant, the functional Chl antenna size of PSII α (171 Chl molecules) and PSII β (90 Chl molecules) were substantially smaller than those of the wild type (Table 3). Taking into consideration the smaller functional Chl antenna in both PSII α and PSII β and the lowered PSII α /PSII β ratio in the mutant, we estimated that PSII in the mutant contained only about 60% of the Chl compared to that in the wild type (not shown). It is evident that absence of lutein, loroxanthin, violaxanthin and neoxanthin resulted in a significantly truncated PSII Chl antenna size. Nevertheless, this functional Chl antenna size was still larger than that of the PSII-core ($N_{\text{PSIIcore}} = 37$ Chl molecules, Manodori et al. 1984, Glick and Melis 1988), suggesting that zeaxanthin alone is sufficient to facilitate the assembly of a significant portion of the auxiliary LHCII. More-

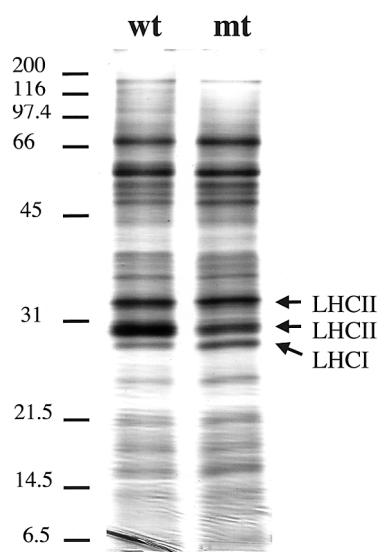


Fig. 3 Thylakoid membrane protein profile from wild type (wt) and *npq2 lor1* mutant (mt) of *C. reinhardtii*. Proteins were separated by SDS-PAGE and visualized by Coomassie staining. The lanes were loaded on an equal Chl basis (4 nmol Chl per lane). The electrophoretic mobility of molecular-weight markers is indicated in kDa.

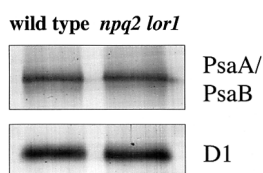


Fig. 4 Western blot analysis of thylakoid membrane proteins of wild type and *npq2 lor1*, probed with specific polyclonal antibodies against the PsaA/PsaB (PSI) or D1 (PSII) reaction center proteins.

over, the occurrence of PSII α centers with a relative large Chl antenna size ($N_{\text{PSII}\alpha} = 171$ Chl molecules) suggested that both major and minor components of the LHCII are assembled and functionally associated with PSII in the *npq2 lor1* mutant. Surprisingly, and in contrast to PSII, the functional Chl antenna size of PSI in the *npq2 lor1* ($N_1 = 294$ Chl molecules) was slightly larger than that of the wild type ($N_1 = 242$ Chl molecules). This result suggests that absence of lutein, loroxanthin, violaxanthin and neoxanthin does not bring about an adverse effect on the functional Chl antenna size of PSI.

SDS-PAGE and Western blot analysis of thylakoid membrane proteins

The results presented above provide evidence for an altered photosynthetic apparatus organization of the *npq2 lor1* mutant. To probe further the effect of the mutation on the Chl antenna size, we qualitatively and quantitatively compared profiles of thylakoid membrane proteins from wild type and *npq2 lor1* mutant. Figure 3 shows SDS-PAGE analysis of isolated

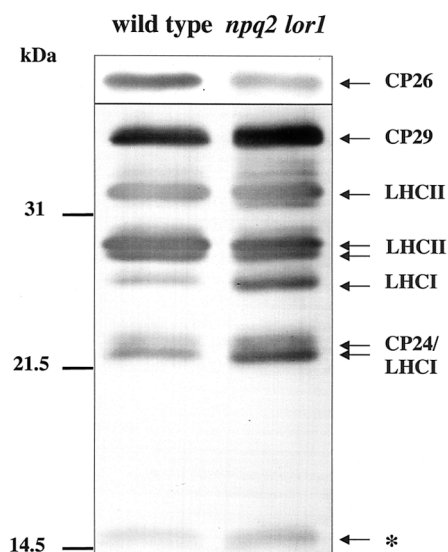


Fig. 5 Western blot analysis of thylakoid membrane proteins of wild type and *npq2 lor1*, probed with specific polyclonal antibodies against the LHC proteins of PSII and PSI. Proteins were loaded on a Chl basis. The position of various LHC proteins is indicated. Asterisk denotes a possible degradation product of the LHC.

thylakoid membrane proteins of wild type and *npq2 lor1*. Comparison of wild type (wt) and mutant (mt) lanes in Fig. 3 shows quantitative, but not qualitative changes in the polypeptide composition between wild type and mutant, mainly occurring in the 31 kDa electrophoretic migration region. It is suggested that, on a per Chl basis, some of the LHCII proteins are depleted in the *npq2 lor1* mutant whereas LHCI proteins are more abundant when compared to that of the wild-type level.

The above assessment was further tested by Western blot analysis. Fig. 4 shows an immunoblot of thylakoid membrane proteins isolated from wild type and *npq2 lor1* mutant, probed with antibodies against the PsaA/PsaB proteins of PSI (Kashino et al. 1990) and the D1 protein of PSII (Kim et al. 1993). On a per Chl basis, the mutant contained slightly more D1 than the wild type. This is consistent with the results of the spectrophotometric analysis (Table 2), in which the Q_A content was about 50% greater in the *npq2 lor1* than that in the wild type. Fig. 4 also shows that the level of PsaA/PsaB proteins is very similar in wild type and *npq2 lor1* mutant indicating that, on a per Chl basis, both strains have approximately the same amount of PSI (Table 2).

Fig. 5 shows a Western blot analysis of thylakoid membrane proteins probed with antibodies that recognize most LHC proteins of *C. reinhardtii* (Bassi et al. 1992, Polle et al. 2000). It is evident from the results in Fig. 5 that, on a per Chl basis, wild type and *npq2 lor1* mutant qualitatively contain the same LHC proteins in their thylakoid membranes. However, absence of lutein, loroxanthin, violaxanthin and neoxanthin brought about changes in the quantity of the various LHC proteins in

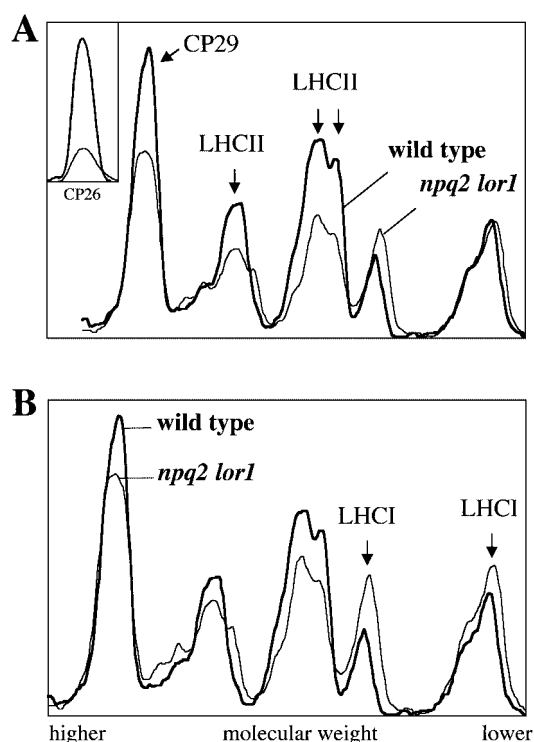


Fig. 6 Densitometric scan of Western-blot lanes from Fig. 5, normalized on the basis of PSII/ Q_A (A) or PSI-P700 (B). Superimposed scans were normalized on the basis of equal Q_A loading. Arrows indicate the position of the various LHC forms. Note that amounts of CP26, CP29 and LHCII per PSII/ Q_A are lower in the *npq2 lor1* mutant compared to wild type (A). Conversely, levels of the LHCI per P700 are greater in the mutant when compared to wild type (B).

the thylakoid membrane of the mutant. Specifically, loss of these xanthophylls resulted in significantly lower levels of CP26 whereas levels of CP29 and CP24 were higher in the *npq2 lor1* than in the wild type. The level of the major LHCII at 29 kDa was lower in the mutant than in the wild type. However, levels of the LHCII subunit migrating at ~33 kDa did not seem to be affected by the mutation. In contrast to this differential effect on LHCII, levels of the various LHCI were uniformly higher in the mutant than in the wild type.

Since we determined the amount of Q_A , P700 and the LHC proteins on a per Chl basis, it was possible to normalize the level of the LHC proteins to that of PSII or PSI in the cells. The result of such analysis, shown in Fig. 6, allows quantitative comparison of the LHC protein content in the thylakoid membrane of wild type and mutant on a per PSII or PSI basis. Fig. 6A shows a comparison on the basis of Q_A . It is evident from Fig. 6A that the amounts of CP29 and LHCII per PSII in the *npq2 lor1* mutant were lowered to about 60% of that seen in the wild type. The amount of CP26 per PSII was drastically reduced to about 25% of that in the wild type. Fig. 6B shows a comparison on the basis of P700. In this case, it is evident that

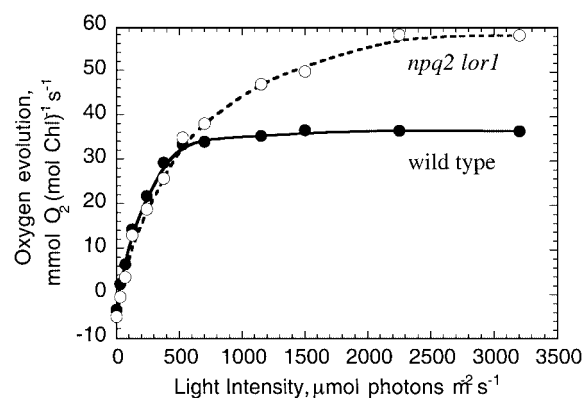


Fig. 7 The light-saturation curve of photosynthesis in wild type and *npq2 lor1* mutant.

the level of LHCI per PSI in the *npq2 lor1* mutant was significantly higher than that of the wild type.

It is noteworthy that all LHC proteins detected in association with the *npq2 lor1* mutant were fully integrated into the lipid bilayer of the corresponding thylakoid membrane. Treatment of thylakoids with 1 M Tris-HCl pH 9.0, a procedure designed to remove extrinsic proteins from the thylakoid membrane, did not result in loss of any LHC polypeptides associated with this mutant strain (data not shown).

Efficiency and rate of photosynthesis

Recently, Bishop et al. (1998) reported that a Car double mutant of the green alga *S. obliquus* with a phenotype similar to that of the *npq2 lor1* mutant in *C. reinhardtii* had a slightly increased photosynthetic capacity, but significantly reduced photosynthetic efficiency. To assess the photosynthetic capacity and efficiency of the *npq2 lor1* mutant, the rate of O_2 evolution was measured and plotted as a function of light intensity, thus obtaining the *photosynthesis vs. irradiance* curve (light-saturation curve). From the slope of the initial linear portion of the light-saturation curve of photosynthesis, information was obtained about the relative efficiency of photosynthesis (Φ) in wild type and mutant (Björkman and Demmig 1987, Neale et al. 1993). The rate of oxygen evolution under light-saturation conditions provided information about P_{max} , the capacity of photosynthesis in the two strains (Powles and Critchley 1980).

Fig. 7 shows the light-saturation curve of photosynthesis for wild type and *npq2 lor1* mutant. As summarized in Table 4, wild type ($\Phi = 0.14 \pm 0.02$) and mutant ($\Phi = 0.125 \pm 0.03$) had similar photosynthetic efficiencies. The photosynthetic capacity of the *npq2 lor1* mutant ($P_{max} = 59 \text{ mmol } O_2 \text{ (mol Chl)}^{-1} \text{ s}^{-1}$) was about 50% greater than that of the wild type ($P_{max} = 36 \text{ mmol } O_2 \text{ (mol Chl)}^{-1} \text{ s}^{-1}$). Table 4 also compares the photochemical conversion efficiency at PSII, measured from the F_v/F_{max} fluorescence ratio in wild type ($F_v/F_{max} = 0.69$) and *npq2 lor1* mutant ($F_v/F_{max} = 0.60$). The similar F_v/F_{max} ratios in wild

Table 4 Gas exchange and PSII efficiency of wild type and a zeaxanthin accumulating *npq2 lor1* mutant of *C. reinhardtii* expressed on a per Chl basis

Parameter	Wild type	Mutant
Respiration (mmol O ₂ (mol Chl) ⁻¹ s ⁻¹)	4.0±0.04	5.1±1.2
Photosynthesis (mmol O ₂ (mol Chl) ⁻¹ s ⁻¹)	36.5±1.8	59.0±12.7
Photosynthetic efficiency (relative values)	0.14±0.02	0.125±0.03
PSII efficiency (F _v /F _{max})	0.69±0.04	0.60±0.03

Values are means ± SD.

type and *npq2 lor1* validate the similar photosynthetic efficiencies as measured from the light-saturation curve of photosynthesis. Taken together, these results suggested that replacement of lutein, loroxanthin and violaxanthin by zeaxanthin, as it occurred in the *npq2 lor1* mutant, did not bring about a significantly adverse effect on light absorption and utilization in the photochemical apparatus of the mutant. This is clearly evidenced by the similar photon conversion efficiencies observed in the photochemical apparatus of the two strains and ultimately by their similar growth rates.

Discussion

We isolated a Car double mutant of *C. reinhardtii* that lacks not only all α -carotenoids (*lor1*) but is also unable to synthesize violaxanthin and neoxanthin from zeaxanthin (*npq2*). These lesions in Car biosynthesis did not impair photoautotrophic growth of the *npq2 lor1* double mutant. Such observation is consistent with findings in *S. obliquus* (Bishop 1996) and *Arabidopsis thaliana* (Pogson et al. 1998). Interestingly, in contrast to reduced virescence and seedling lethality of the analogous *aba1 lut2* mutant of *Arabidopsis* (Pogson et al. 1998), the growth rate of the *npq2 lor1 C. reinhardtii* mutant was not compromised. Accumulation of zeaxanthin in the *npq2 lor1* occurred concomitant with a lowering in the cellular Chl and Car content, by about one-third as compared to that of the wild type. However, levels of PSII per cell were similar and levels of PSI per cell were only slightly lower in the *npq2 lor1* when compared to that of the wild type. Therefore, it is concluded that a reduction in the level of Chl and Car per cell in the *npq2 lor1* mutant is mainly due to a reduction in the amount of LHC proteins.

Previous work with Car mutants of green algae (Chunaev et al. 1991, Bishop et al. 1995, Bishop et al. 1998, Niyogi et al. 1997a, Niyogi et al. 1997b) and higher plants (Pogson et al. 1996, Tardy and Havaux 1996) showed that loss of lutein and/or violaxanthin was accompanied by alterations in the profile of the LHC proteins in the photosynthetic apparatus. In agreement with these reports, we demonstrated in this work that lack of xanthophylls that are derived from α -carotene, as well as lack of xanthophylls derived from zeaxanthin, resulted in an altered LHC composition in the *npq2 lor1* mutant (Fig. 5).

Since all LHC polypeptides are present in the thylakoid membranes of *npq2 lor1* (Fig. 5) and washing of thylakoid membranes did not remove any LHC (data not shown), we conclude that zeaxanthin can successfully substitute for other xanthophylls in the LHC in *C. reinhardtii*. The successful substitution of other xanthophylls by zeaxanthin in the LHCII was also demonstrated in vitro when zeaxanthin was used as the only xanthophyll in reconstitution experiments (Croce et al. 1999b, Hobe et al. 2000). Interestingly, the in vitro studies revealed that LHCII containing only zeaxanthin were not as efficient in energy transfer as control LHCII (Croce et al. 1999b). Our in vivo results, however, showed that *npq2 lor1* had a PSII and overall photon conversion efficiency similar to that of the wild type. These findings are in agreement with results reported for the higher plant *A. thaliana* (Hurry et al. 1997). In contrast, stable assembly of the major LHCII was not observed in lutein-lacking mutants of the green alga *S. obliquus* (Bishop 1996, Bishop et al. 1998, Heinze et al. 1997). Obviously, absence of specific xanthophylls may have a variable effect on the assembly of the major LHCII in different organisms.

Quantitative LHC polypeptide analysis revealed that PSII units in the *npq2 lor1* mutant contained lower levels of CP26 (25% of the wt) and CP29 (60% of the wt). They also contained a lower level of the major LHCII (60% of the wt). Consistent with the above-described biochemical analysis, the spectrophotometric/kinetic analysis showed that the functional light-harvesting Chl antenna size of the *npq2 lor1* is only about 60% of that in the wild type. Taken together, this rigorous analysis suggests that many PSII units in the *npq2 lor1* mutant do not contain a copy of CP26 and/or CP29. In addition, they may lack some of the peripheral components of the trimeric LHCII. In contrast, the level of CP24 per PSII was not affected in the *npq2 lor1*, indicating that every PSII unit in the mutant has a copy of CP24. Fig. 8 shows, as a working hypothesis, the organization and size of the Chl antenna of PSII α and PSII β units in wild type and *npq2 lor1* mutant. This model is consistent with the results presented in this work and also consistent with the analyses presented by other authors (Hankamer et al. 1997, Melis 1998, Nield et al. 2000). The Chl antenna model of PSII, shown in Fig. 8, is based on the assumption of three levels of organization for the Chl-proteins in PSII.

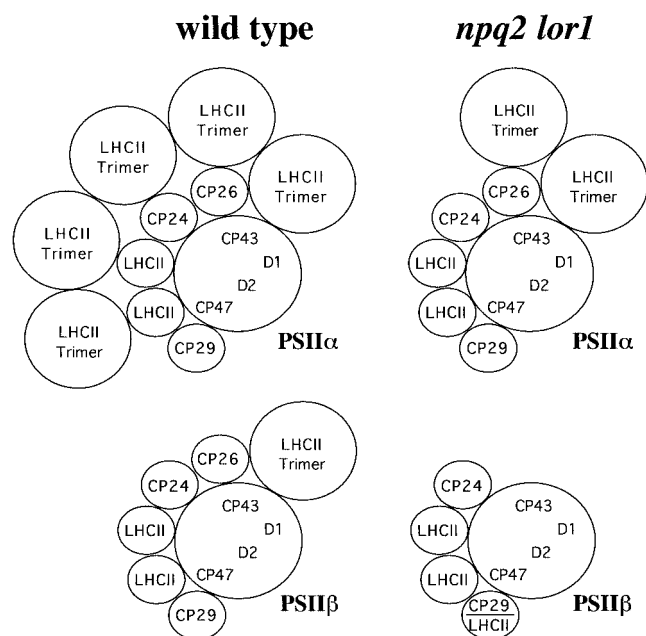


Fig. 8 Model of the *C. reinhardtii* PSII light-harvesting antenna organization in wild type and *npq2 lor1* mutant.

- The PSII-core complex is the first level consisting of D1, D2, CP43, and CP47. This is the minimum PSII configuration that can be stably assembled in vivo. The PSII-core contains about 37 Chl *a* molecules (Manodori et al. 1984, Glick and Melis 1988).

- The second level of organization contains, in addition to the PSII-core, one copy of CP29, CP26, CP24, two LHCII monomers and one LHCII trimer. This PSII complex is defined as PSIIβ and contains about 130 Chl *a* and Chl *b* molecules (Melis 1991).

- Further step-wise addition of trimeric LHCII to PSIIβ results in the formation of the PSIIα units (Melis 1998).

On the basis of the quantitative data presented in this work, we estimated that only about 25% of PSII units in the *npq2 lor1* mutant contain CP26. It is thought that CP26 serves as an intermediary in the supramolecular structure of the LHCII by serving to connect peripheral LHCII trimers to the PSII-core. In the absence of CP26 from 75% of the PSII units in the *npq2 lor1* mutant, it follows that an equivalent number of PSII might not be able to bind trimeric LHCII, a prerequisite for the development of the mature PSIIα type of Chl antenna. Therefore, PSII units without a copy of CP26 should have a Chl antenna size that is slightly smaller than that of PSIIβ, owing to the lack of the trimeric LHCII and lack of CP26. This is actually observed in the Chl antenna size of PSIIβ in the *npq2 lor1*, which contains 90 Chl molecules instead of the 135 Chl molecules detected in PSIIβ of the wild type. The difference in Chl antenna size between PSIIβ in wild type and *npq2 lor1* mutant (about 45 Chl molecules) is consistent with the

number of Chl molecules predicted to be in association with one LHCII trimer plus one copy of CP26. Therefore, we conclude that only monomeric LHCII are structurally associated with PSII in the antenna of the mutant, having an antenna size of 90 Chl molecules (Fig. 8). Since the PSII-core complex contains about 37 Chl *a* molecules, and a LHCII monomer is believed to contain 8–12 Chl molecules (Sandona et al. 1998), it follows that the remaining ~50 Chl *a* and Chl *b* molecules in PSIIβ of the mutant would occupy binding sites in about four LHCII monomers.

It is noteworthy that a permanently truncated PSII Chl antenna size has taken place due to alterations in the Car biosynthetic pathway. This truncated Chl antenna mutant exhibited essentially the same photon conversion efficiency as the wild type and had a 50% greater photosynthetic capacity. In contrast to these results with the *npq2 lor1* mutant of *C. reinhardtii*, Bishop et al. (1998) showed that an analogous double mutant of the green alga *S. obliquus* had a significantly lower photosynthetic efficiency and a photosynthetic capacity of only about 20% greater than that of the wild type. The difference between these results could be explained by the fact that *S. obliquus* was cultivated under heterotrophic growth conditions and only shifted to photoautotrophy prior to the measurements, whereas *Chlamydomonas* in this study was grown entirely under photoautotrophic conditions. Heterotrophy is known to affect the efficiency and capacity of the photosynthetic apparatus (Polle et al. 2000) and this consideration may be sufficient to explain differences between the *Scenedesmus* and *Chlamydomonas* results.

In summary, the present work establishes that lutein, loroxanthin, violaxanthin and neoxanthin are not essential for the assembly and function of the LHCII and LHCI in the photosynthetic apparatus. With the possible exception of neoxanthin, these xanthophylls can be successfully substituted by zeaxanthin, resulting in the stable assembly of most, but all, Chl *a/b* LHCs. In consequence, the *npq2 lor1* mutant displayed a truncated PSII Chl antenna size but had a normal PSI Chl antenna size.

Acknowledgements

The work was produced under a DOE-UCB Cooperative Agreement Number DE-FC36-00GO10536 to A.M. Also supported (partially) by NIH grant number GM5879901 to K.K.N. We thank Ms. S.A. Chou for assistance with the preparation of the CP26 antibody, Dr. R. Bassi for providing the LHC antibodies and Dr. I. Enami for the PSI antibody, respectively.

References

- Anderson, J.M. (1986) Photoregulation of the composition, function, and structure of thylakoid membranes. *Annu. Rev. Plant Physiol.* 37: 93–136.
- Arnon, D.I. (1949) Copper enzymes in isolated chloroplasts. Polyphenoloxidase in *Beta vulgaris*. *Plant Physiol.* 24: 1–15.
- Bassi, R., Pineau, B., Dainese, P. and Marquardt, J. (1993) Carotenoid-binding proteins of photosystem II. *Eur. J. Biochem.* 212: 297–303.

- Bassi, R., Soen, S.Y., Frank, G., Zuber, H. and Rochaix, J.-D. (1992) Characterization of chlorophyll *a/b* proteins of photosystem I from *Chlamydomonas reinhardtii*. *J. Biol. Chem.* 267: 25714–25721.
- Bishop, N.I. (1996) The β,ϵ -carotenoid, lutein, is specifically required for the formation of the oligomeric forms of the light harvesting complex in the green alga, *Scenedesmus obliquus*. *J. Photochem. Photobiol. B* 36: 279–283.
- Bishop, N.I., Bulga, B. and Senger, H. (1998) Photosynthetic capacity and quantum requirement of three secondary mutants of *Scenedesmus obliquus* with deletions in carotenoid biosynthesis. *Bot. Acta* 111: 231–235.
- Bishop, N.I., Urbig, T. and Senger, H. (1995) Complete separation of the β,ϵ - and β,β -carotenoid biosynthetic pathways by a unique mutation of the lycopen cyclase in the green alga, *Scenedesmus obliquus*. *FEBS Lett.* 367: 158–162.
- Björkman, O. and Demmig, B. (1987) Photon yield of O₂ evolution and chlorophyll fluorescence characteristics at 77K among vascular plants of diverse origins. *Planta* 170: 489–504.
- Chunaev, A.S., Mirnaya, O.N., Maslov, V.G. and Boschetti, A. (1991) Chlorophyll *b*- and lutein-deficient mutants of *Chlamydomonas reinhardtii*. *Photosynthetica* 25: 291–301.
- Connolly, J.P., Müller, M.G., Basi, R., Croce, R. and Holzwarth, A.R. (1997) Femtosecond transient absorption study of carotenoid to chlorophyll energy transfer in the light-harvesting complex II of photosystem II. *Biochemistry* 36: 281–287.
- Croce, R., Remelli, R., Varotto, C., Breton, J. and Bassi, R. (1999a) The neoxanthin binding site of the major light harvesting complex (LHCII) from higher plants. *FEBS Lett.* 456: 1–6.
- Croce, R., Weiss, S. and Bassi, R. (1999b) Carotenoid-binding sites of the major light-harvesting complex II of higher plants. *J. Biol. Chem.* 274: 29613–29623.
- Cunningham, F.X. and Gantt, E. (1998) Genes and enzymes of carotenoid biosynthesis in plants. *Annu. Rev. Plant Physiol. Plant Mol. Biol.* 49: 557–583.
- Demmig-Adams, B., Gilmore, A.M. and Adams, W.W. (1996) Carotenoids 3: In vivo function of carotenoids in higher plants. *FASEB J.* 10: 403–412.
- Di Paolo, M.L., Dal Belin Peruffo, A. and Bassi, R. (1990) Immunological studies on chlorophyll-*a/b* proteins and their distribution in thylakoid membrane domains. *Planta* 181: 275–286.
- Garcia-Plazaola, J.I. and Becerril, J.M. (1999) A rapid high-performance liquid chromatography method to measure lipophilic antioxidants in stressed plants: Simultaneous determination of carotenoids and tocopherols. *Phytochem. Anal.* 10: 307–313.
- Glick, R.E. and Melis, A. (1988) Minimum photosynthetic unit size in System-I and System-II of barley chloroplasts. *Biochim. Biophys. Acta* 934: 151–155.
- Green, B.R. and Durnford, D.G. (1996) The chlorophyll-carotenoid proteins of oxygenic photosynthesis. *Annu. Rev. Plant Physiol. Plant Mol. Biol.* 47: 685–714.
- Hankamer, B., Barber, J. and Boekema, E.J. (1997) Structure and membrane organization of PSII in green plants. *Annu. Rev. Plant Physiol. Plant Mol. Biol.* 48: 641–671.
- Harris, E.H. (1989) The *Chlamydomonas* Sourcebook. In a Comprehensive Guide to Biology and Laboratory Use. Edited by Harris, E.H. pp. 25–29. Academic Press, Inc., San Diego.
- Heinze, I., Pfündel, E., Hühn, M. and Dau, H. (1997) Assembly of light harvesting complexes II (LHC-II) in the absence of lutein. A study on the α -carotenoid-free mutant C-2A'-34 of the green alga *Scenedesmus obliquus*. *Biochim. Biophys. Acta* 1320: 188–194.
- Hobe, S., Niemeier, H., Bender, A. and Paulsen, H. (2000) Carotenoid binding sites in LHCIIb. Relative affinities towards major xanthophylls of higher plants. *Eur. J. Biochem.* 267: 616–624.
- Hurry, V., Andersson, J.M., Chow, W.S. and Osmond, C.B. (1997) Accumulation of zeaxanthin in abscisic acid-deficient mutants of *Arabidopsis* does not affect chlorophyll quenching or sensitivity to photoinhibition in vivo. *Plant Physiol.* 113: 639–648.
- Jansson, S. (1994) The light-harvesting chlorophyll *a/b*-binding proteins. *Biochim. Biophys. Acta* 1184: 1–19.
- Kashino, Y., Enami, I., Satoh, K. and Katoh, S. (1990) Immunological cross-reactivity among corresponding proteins of photosystems I and II from widely divergent photosynthetic organisms. *Plant Cell Physiol.* 31: 479–488.
- Kim, J.H., Nemson, J.A. and Melis, A. (1993) Photosystem II reaction center damage and repair in *D. salina* green alga. Analysis under physiological and irradiance-stress conditions. *Plant Physiol.* 103: 181–189.
- Kuhlbrandt, W., Wang, D.N. and Fujiyoshi, Y. (1994) Atomic model of plant light-harvesting complex by electron crystallography. *Nature* 367: 614–621.
- Laemmli, U.K. (1970) Cleavage of structural proteins during the assembly of the head of bacteriophage T4. *Nature* 227: 680–685.
- Lee, A.I.-C. and Thornber, J.P. (1995) Analysis of the pigment stoichiometry of pigment-protein complexes from barley (*Hordeum vulgare*). *Plant Physiol.* 107: 565–574.
- Manodori, A., Alhadeff, M., Glazer, A.N. and Melis, A. (1984) Photochemical apparatus organization in *Synechococcus* 6301 (*Anacystis nidulans*). Effect of phycobilisome mutation. *Arch. Microbiol.* 139: 117–123.
- Melis, A. (1989) Spectroscopic methods in photosynthesis: photosystem stoichiometry and chlorophyll antenna size. *Phil. Trans. R. Soc. Lond. B* 323: 397–409.
- Melis, A. (1991) Dynamics of photosynthetic membrane composition and function. *Biochim. Biophys. Acta* 1058: 87–106.
- Melis, A. (1998) Photostasis in plants. Mechanism and regulation. In *Photostasis and Related Phenomena*. Edited by Williams, T.P. and Thistle, A.B. pp. 207–221. Plenum Press, New York.
- Melis, A. and Anderson, J.M. (1983) Structural and functional organization of the photosystems in spinach chloroplasts: Antenna size, relative electron transport capacity, and chlorophyll composition. *Biochim. Biophys. Acta* 724: 473–484.
- Melis, A. and Brown, J.S. (1980) Stoichiometry of system I and system II reaction centers and of plastoquinone in different photosynthetic membranes. *Proc. Natl. Acad. Sci. USA* 77: 4712–4716.
- Melis, A. and Duysens, L.N.M. (1979) Biphasic energy conversion kinetics and absorbance difference spectra of PS II of chloroplasts. Evidence for two different PS II reaction centers. *Photochem. Photobiol.* 29: 373–382.
- Melis, A., Spangfort, M. and Andersson, B. (1987) Light-absorption and electron-transport balance between photosystem II and photosystem I in spinach chloroplasts. *Photochem. Photobiol.* 45: 129–136.
- Neale, P.J., Cullen, J.J., Lesser, M.P. and Melis, A. (1993) Physiological bases for detecting and predicting photoinhibition of aquatic photosynthesis by PAR and UV radiation. In *Photosynthetic Responses to the Environment*. Current Topics in Plant Physiology, Vol. 8. Edited by Yamamoto, H.Y. and Smith, C.M. pp. 61–77. American Society of Plant Physiologists Publication Series.
- Nield, J., Orlova, E.V., Morris, E.P., Gowen, B., Van Heel, M. and Barber, J. (2000) 3D map of the plant photosystem II supercomplex obtained by cryoelectron microscopy and single particle analysis. *Nature* 7: 44–47.
- Niyogi, K.K. (1999) Photoprotection revisited: Genetic and molecular approaches. *Annu. Rev. Plant Physiol. Plant Mol. Biol.* 50: 333–359.
- Niyogi, K.K., Björkman, O. and Grossman, A.R. (1997a) *Chlamydomonas* xanthophyll cycle mutants identified by video imaging of chlorophyll fluorescence quenching. *Plant Cell* 9: 1369–1380.
- Niyogi, K.K., Björkman, O. and Grossman, A.R. (1997b) The roles of specific xanthophylls in photoprotection. *Proc. Natl. Acad. Sci. USA* 94: 14162–14167.
- Niyogi, K.K., Grossman, A.R. and Björkman, O. (1998) Arabidopsis mutants define a central role for the xanthophyll cycle in the regulation of photosynthetic energy conversion. *Plant Cell* 10: 1121–1134.
- Pogson, B.J., McDonald, K.A., Truong, M., Britton, G. and DellaPenna, D. (1996) Arabidopsis carotenoid mutants demonstrate that lutein is not essential for photosynthesis in higher plants. *Plant Cell* 8: 1627–1639.
- Pogson, B.J., Niyogi, K.K., Björkman, O. and DellaPenna, D. (1998) Altered xanthophyll compositions adversely affect chlorophyll accumulation and non-photochemical quenching in *Arabidopsis* mutants. *Proc. Natl. Acad. Sci. USA* 95: 13324–13329.
- Polle, J.E.W., Benemann, J.R., Tanaka, A. and Melis, A. (2000) Photosynthetic apparatus organization and function in the wild type and a chlorophyll *b*-less mutant of *Chlamydomonas reinhardtii*. Dependence on carbon source. *Planta* 211: 335–344.
- Powles, S.B. and Critchley, C. (1980) Effect of light intensity during growth on photoinhibition of intact attached bean leaflets. *Plant Physiol.* 65: 1181–1187.
- Ruban, A.V., Young, A.J., Pascal, A.A. and Horton, P. (1994) The effects of illumination on the xanthophyll composition of the photosystem II light-harvesting complex of spinach thylakoid membranes. *Plant Physiol.* 104: 227–234.
- Sandona, S., Croce, R., Pagano, A., Crimi, M. and Bassi, R. (1998) Higher plants light harvesting proteins. Structure and function as revealed by mutation analysis of either protein or chromophore moieties. *Biochim. Biophys.*

- Acta* 1365: 207–214.
- Sumner, J.B. and Somers, G.F. (1944) *Laboratory Experiments in Biological Chemistry*. pp. 69–75. Academic Press Inc., New York.
- Tardy, F. and Havaux, M. (1996) Photosynthesis, chlorophyll fluorescence, light-harvesting system and photoinhibition resistance of a zeaxanthin-accumulating mutant of *Arabidopsis thaliana*. *J. Photochem. Photobiol.* 34: 87–94.
- Verhoeven, A.S., Adams III, W.W., Demmig-Adams, B., Croce, R. and Bassi, R. (1999) Xanthophyll cycle pigment localization and dynamics during exposure to low temperatures and light stress in *Vinca major*. *Plant Physiol.* 120: 727–737.
- Yamamoto, H.Y. (1979) Biochemistry of the violaxanthin cycle in higher plants. *Pure Appl. Chem.* 51: 639–648.
- Yamamoto, H.Y. (1985) Xanthophyll cycles. *Methods Enzymol.* 110: 303–312.

(Received December 26, 2000; Accepted February 19, 2001)